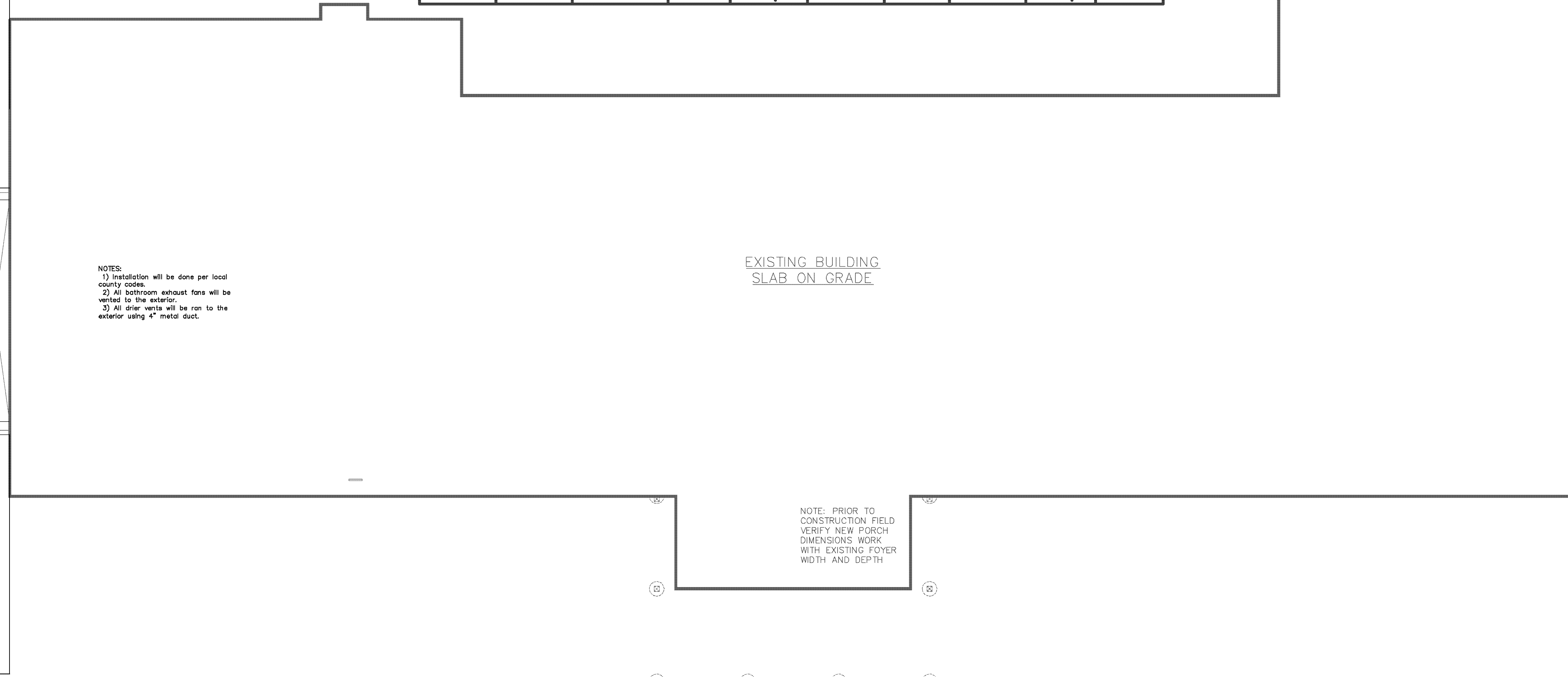


FOUNDATION/BASEMENT PLAN-NEW ADDITION

1/8" = 1'-0"

Equipment Schedule									
Unit # / Location	Quantity	Control	Manufacture	Description	Model #	Cooling Capacity	Heating Capacity	Electrical Data on Unit or Device	Electrical Data on Aux Heat
GRD 1 / NEW SWELCH SCHEDULE	1	ZONE 5 STUDY RM ZONE 5 PROJECT RM	EMERSON/3RD CONFORT	Packaged Gas Heat Pump 2 STS (water to air)	4T0722M1T3C	65,000/42,700 STU/HR	65,700/44,400 STU/HR W/ SWV SUP	200/200 NAW/200 NAW/400	200/200 2-00 Amp 2-00 Amp
GRD 2 / SECOND FLOOR MECH RM	1	KITCHEN, BDRMS, CONF, RESTROOM, REAR	EMERSON/3RD CONFORT	Packaged Gas Heat Pump 2 STS (water to air)	4T0722M1T3C	67,400/42,700 STU/HR	65,000/42,000 STU/HR W/ SWV SUP	200/200 NAW/200 NAW/400	200/200 3 PH 2-00 Amp
GRD 3 / FIRST FLOOR CLOSET	1	POTABLE WATER	EMERSON/3RD CONFORT	Gas Heat Pump 2 STS (water to water)	4T0722M1T3C	N/A	48,000 STU/HR	200/200 NAW/200 NAW/400	N/A
PTHP 1 / 3000 REARS	41	REARS	AMANA	TERMINAL HEAT PUMPS	PTHE32300R 2P	8,700 STU/HR	9,000 STU/HR W/ SWV SUP	200/200 20 Amp PENETRABLE CAS	YIRED BY HWY. IN LINE SEE UNIT DATA
PTHP 2 / 3000 REARS	16	REARS	AMANA	TERMINAL HEAT PUMPS	PTHE32300R 2P	8,700 STU/HR	9,000 STU/HR W/ SWV SUP	200/200 20 Amp PENETRABLE CAS	YIRED BY HWY. IN LINE SEE UNIT DATA
PTHP 3 / 3000 REARS	2	REARS	AMANA	TERMINAL HEAT PUMPS	PTHE32300R 2P	8,900 STU/HR	9,200 STU/HR W/ SWV SUP	200/200 20 Amp CAS	YIRED BY HWY. IN LINE SEE UNIT DATA
30 -4 / FIRST FLOOR MECH RM	1	Potable Hot Water	TURBOMAX	33 Gallon SUSPECT TANK	300	N/A	N/A	N/A	N/A
Zone Control	1	ZONE 5 STUDY RM ZONE 5 PROJECT RM	Honeywell	Zone Control For Gas unit 1	H2488A	N/A	N/A	24 VAC	N/A
WH-1 / FOYER	4	STAR WAY / FOYER	DAYTON	WALL MOUNT FAN HEATING UNIT	SU800	N/A	8,500 STU/HR 2-00V	200/200 25 Amp	N/A
HD-20	4	N/A	Lennax	High EFF. Air Filter	HD-25	N/A	N/A	N/A	N/A
T	2	N/A	WHITE ROBERS	MULTI STAGE THERMOSTAT	1F75-2277	N/A	N/A	24 Volts	N/A
S	2	N/A	WHITE ROBERS	REMOTE SENSER	F145-2280	N/A	N/A	N/A	N/A
PROJECT RM	1	600 CFM	-	EXHAUST FAN	WALL MOUNTED	N/A	N/A	200V 1-PH	N/A
BASEMENT BATH	1	375 CFM	-	EXHAUST FAN	IN-LINE	N/A	N/A	200V 1-PH	N/A
SHOWER	2	300 CFM	-	EXHAUST FAN	IN-LINE	N/A	N/A	200V 1-PH	N/A
2ST FLOOR TOILETS	1	300 CFM	-	EXHAUST FAN	IN-LINE	N/A	N/A	200V 1-PH	N/A
3RD FLOOR TOILETS	1	400 CFM	-	EXHAUST FAN	IN-LINE	N/A	N/A	200V 1-PH	N/A
PRIVATE BATHS	7	50 CFM	-	EXHAUST FAN	CEILING	N/A	N/A	200V 1-PH	N/A
2ST FLOOR WARDROBE TOILETS	1	140 CFM	-	EXHAUST FAN	CEILING	N/A	N/A	200V 1-PH	N/A
Foyer Chiller/Hot	1	Foyer	Waterside	2 Ton Heat Pump		14,000 STU/HR	14,000 STU/HR	200/200 25 Amp	N/A

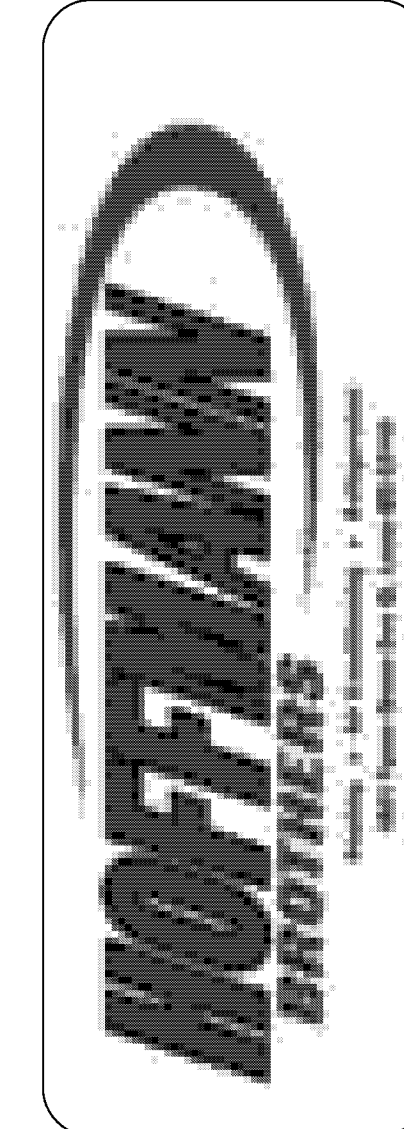


FOUNDATION PLAN-NEW PORCH

1/8" = 1'-0"

REVISIONS	BY

KAPPA SIGMA HOUSE
1701 WHITE COLUMNS DRIVE
ROLLA, MO 65401

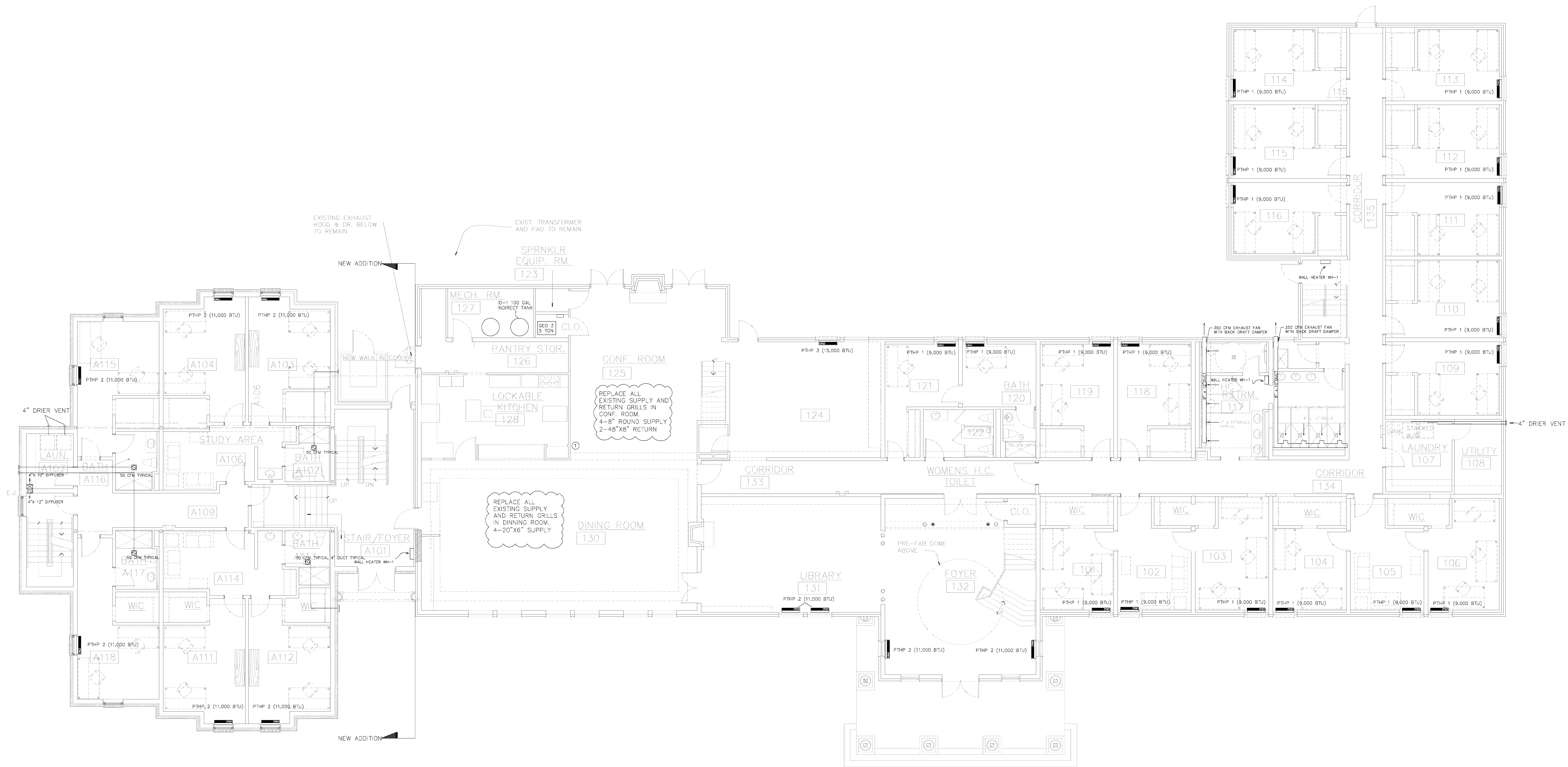


DRAWN: M.S.
SCALE: 1/8"=1'
JOB #:
DATE: 4/27/10
MECHANICAL PLAN

SHEET:

M-1

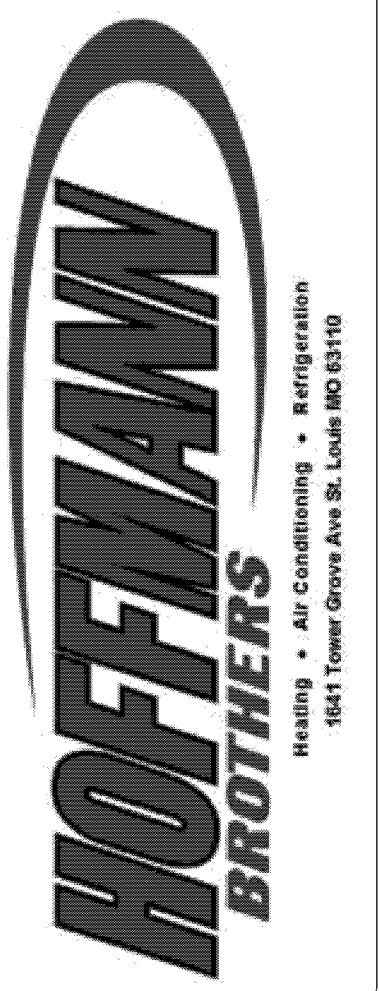
REVISIONS	BY



FIRST FLOOR PLAN-NEW ADDITION
 1/8" = 1'-0"

FIRST FLOOR PLAN-EXISTING BUILDING
 1/8" = 1'-0"

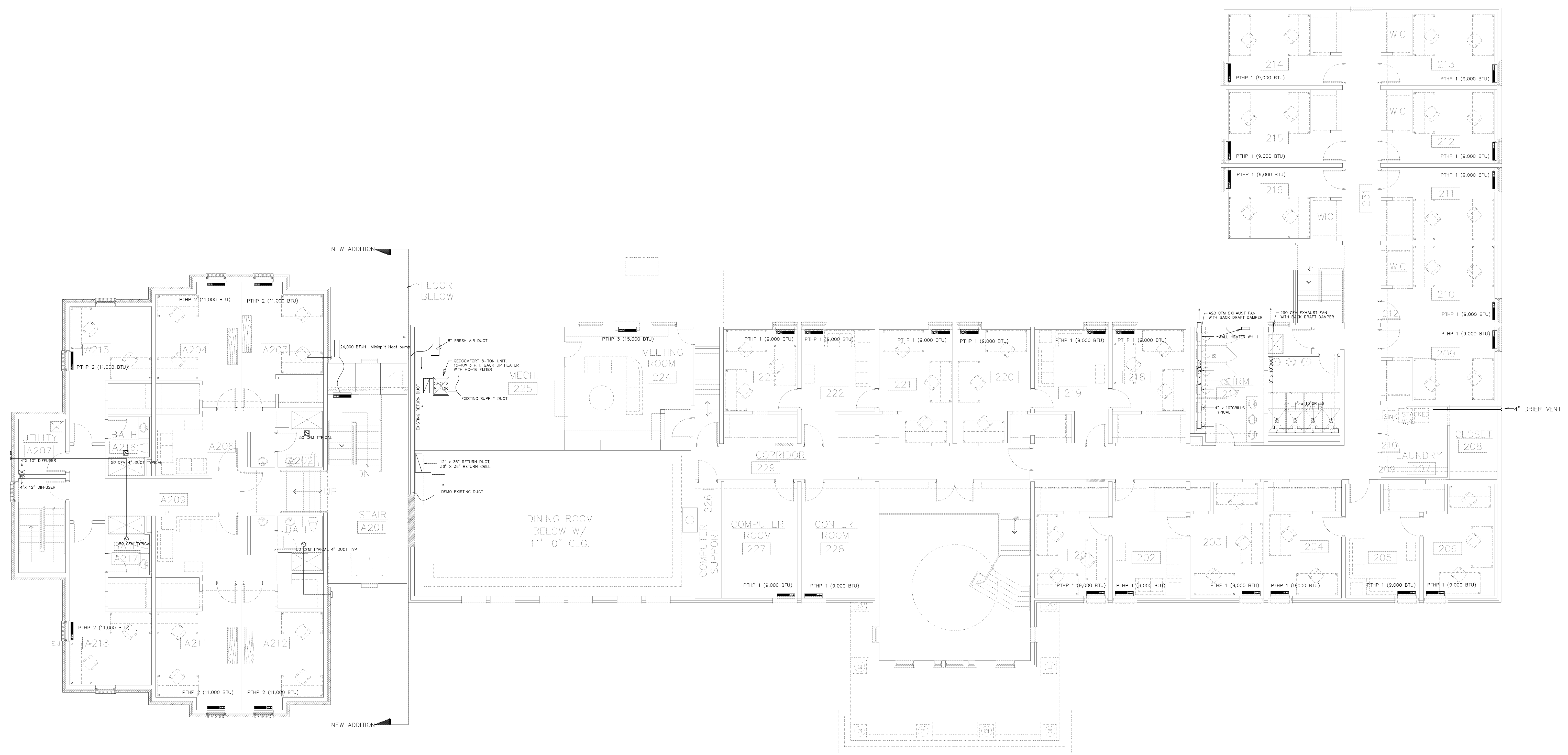
KAPPA SIGMA HOUSE
1701 WHITE COLUMNS DRIVE
ROLLA, MO 65401



DRAWN: M. S.
 SCALE: 1/8"=1'
 JOB #:
 DATE: 4/27/10
 MECHANICAL PLAN

SHEET:
M-2

REVISIONS	BY



SECOND FLOOR PLAN-NEW ADDITION

1/8" = 1'-0"

SECOND FLOOR PLAN-EXISTING BUILDING

1/8" = 1'-0"

KAPPA SIGMA HOUSE
1701 WHITE COLUMNS DRIVE
ROLLA, MO 65401



DRAWN: M. S.

SCALE: 1/8"=1'

JOB #:

DATE: 4/27/10

MECHANICAL PLAN

SHEET:

M-3